

User Login

To login into the **cuteQM** application,

1. Open your web browser.
2. Type the cuteQM URL provided by your administrator / received in the user account creation email, in the address bar of your web browser.

The login page appears.



3. In the login page, enter your user name and password in the respective boxes.



Note: If you forgot your password, click “**I can’t access my account**”. You will be redirected into a new web page. Enter your username to receive your password.

4. In the **Module** section, select **Pressure Vessel**.
5. Click **Login**.

Once you have successfully logged in into the **cuteQM** application, the home page of the **cuteQM** app opens.

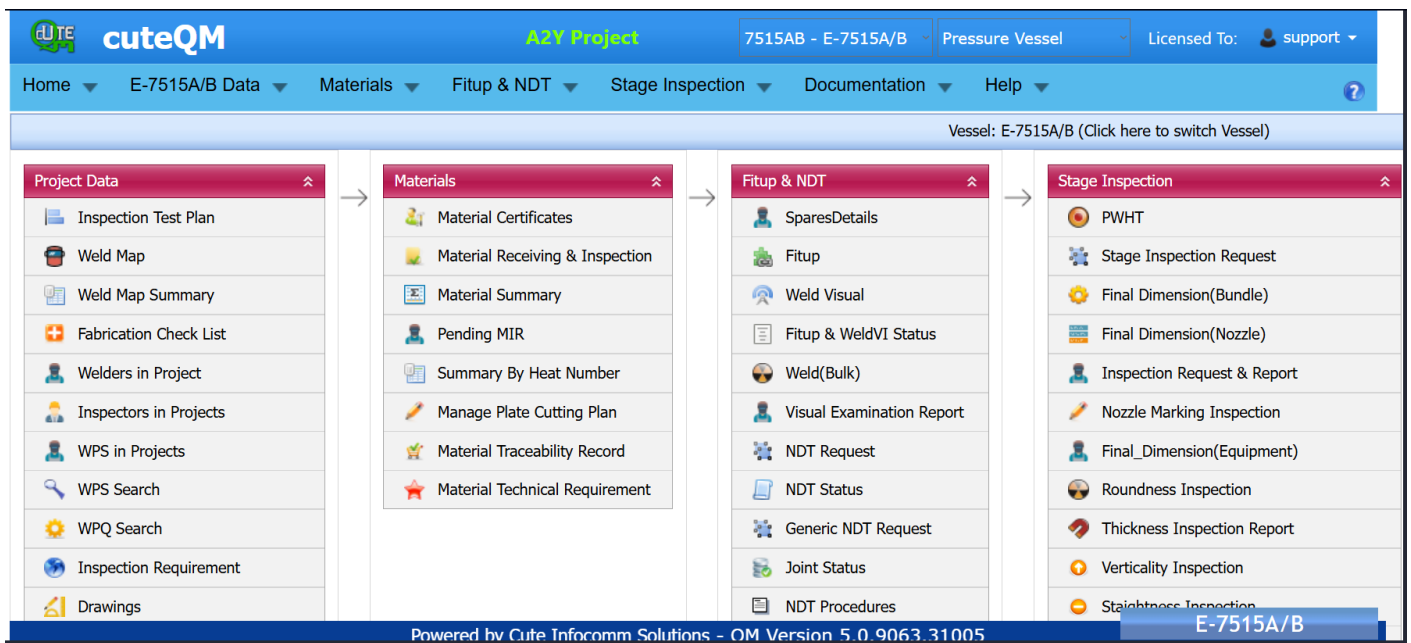


Figure 1.1 Home page of **cuteQM** application

image-1651036329129.png

Image not found or type unknown

Note: The user name you have entered, the project you have been assigned, and the module you have selected are displayed in the upper right corner of the home page.

Change Password

If you want to change your current password,

1. Click your user name displayed on the quick access bar of the home page. See Fig 1.1.

A drop-down list opens with multiple options.

image-1651036373583.png

Image not found or type unknown

2. Click the **Change Password**

The **Change Password** page opens.

image-1651036428593.png

Image not found or type unknown

image-1651036439155.png

Image not found or type unknown

Note: Before changing your password read the conditions specified in the **Change Password** page.

3. In the **Password** box, enter your current password.
4. In the **New Password** box, enter your new password.
5. In the **Confirm New Password** box, enter your new password again.
6. Click **Change Password**.

Your password will be successfully changed.

Log Out

If you want to log out from the application,

1. Click your user name displayed on the quick access bar of the home page. See Fig 1.1.

A drop-down list opens with multiple options.

2. Click **Log out**.

Your current session ends now. The home page appears.

Revision #15

Created 27 April 2022 04:39:43 by Babu

Updated 23 August 2025 14:02:26 by Jnaveen