

Introduction

Welcome to **cuteQM Pressure Vessel Module**, a comprehensive digital solution designed to simplify and standardize the management of pressure vessels fabrication across their entire lifecycle. This module is a part of the cuteQM platform, tailored to meet the stringent requirements of safety, compliance, and operational efficiency in industries that rely on pressure equipment.

Pressure vessels are critical assets, and ensuring their integrity requires consistent inspection, documentation, and regulatory compliance. The cuteQM Pressure Vessel Module provides organizations with an intuitive, centralized system to track, monitor, and manage all pressure vessel-related activities. From material receiving and inspection scheduling to compliance reports and release notes, the module ensures that all information is accurate, accessible, and audit-ready.

This manual will guide you through the features, workflows, and best practices of the module, enabling you to:

- Streamline inspection and documentation processes
- Ensure compliance with international standards and safety regulations
- Enhance transparency and accountability with digital records
- Improve decision-making with real-time dashboards and reports

Whether you are a plant manager, quality manager, quality engineer or production supervisor, the cuteQM Pressure Vessel Module is built to support your role with reliable tools that reduce manual effort and improve confidence in equipment safety.

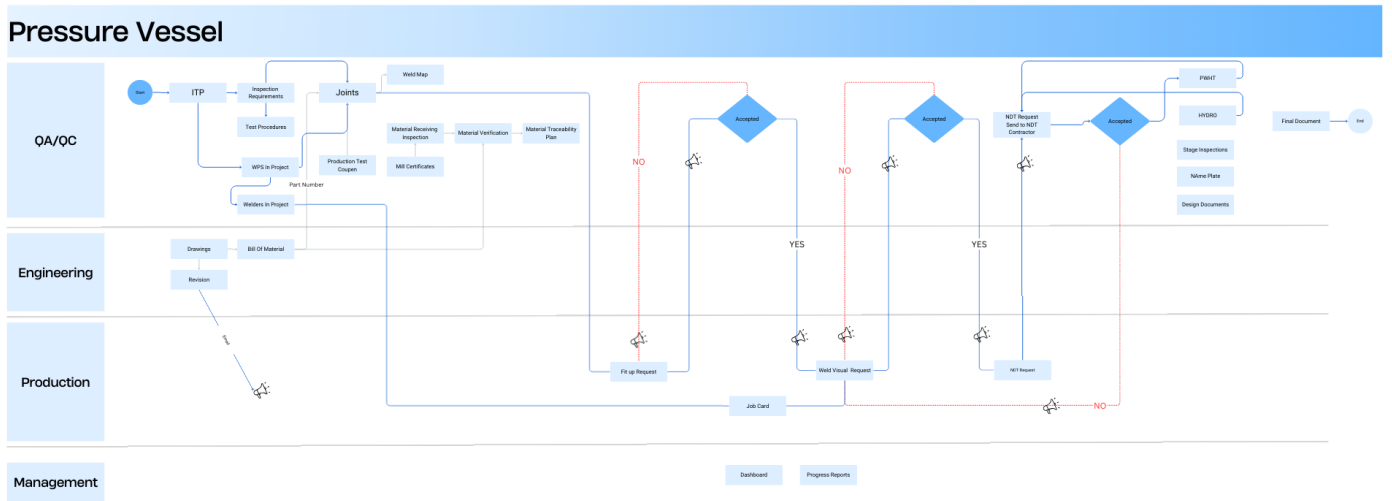
Who Should Use This Manual

This manual is intended for all professionals involved in the lifecycle management of pressure vessels. Typical users include:

- **QA/QC Engineers** - to oversee quality checks, inspection records, and release documentation
- **Engineers** - to update design drawings and update the BOM etc
- **Production Team** - to ensure make efficient request for inspection enter very little data as possible
- **Plant Operators and Supervisors** - to monitor vessel progress and operate safety in real time
- **Management Teams** - to review performance dashboards and support informed decision-making

By following the guidance in this manual, users can maximize the benefits of the cuteQM Pressure Vessel Module and maintain the highest standards of safety and reliability for their operations.

The below is the overall flow of the system



Revision #2

Created 23 August 2025 13:38:26 by Jnaveen

Updated 23 August 2025 14:02:04 by Jnaveen