

# Home & Project

The home menu in the **cuteQM** used to provide access to view the dashboard and switch board of a project. This menu also helps you to change project to work on. Also some of the approval dashboards and daily operational job issuance menu items are shown here for easy access.

All users assigned with any roles can view **Switch Board** and access **Switch Project** in the **Home** menu.

## Switch Board

The **Switch Board** tab in the **Home** menu show the consolidated view of various tabs listed in multiple menus in the menu bar.

Once you have successfully logged in into the **cuteQM**, you can view the Home Page. In the Home Page, the menu bar appears with multiple menus, otherwise you can select the **Switch Board** tab to view all the menus.

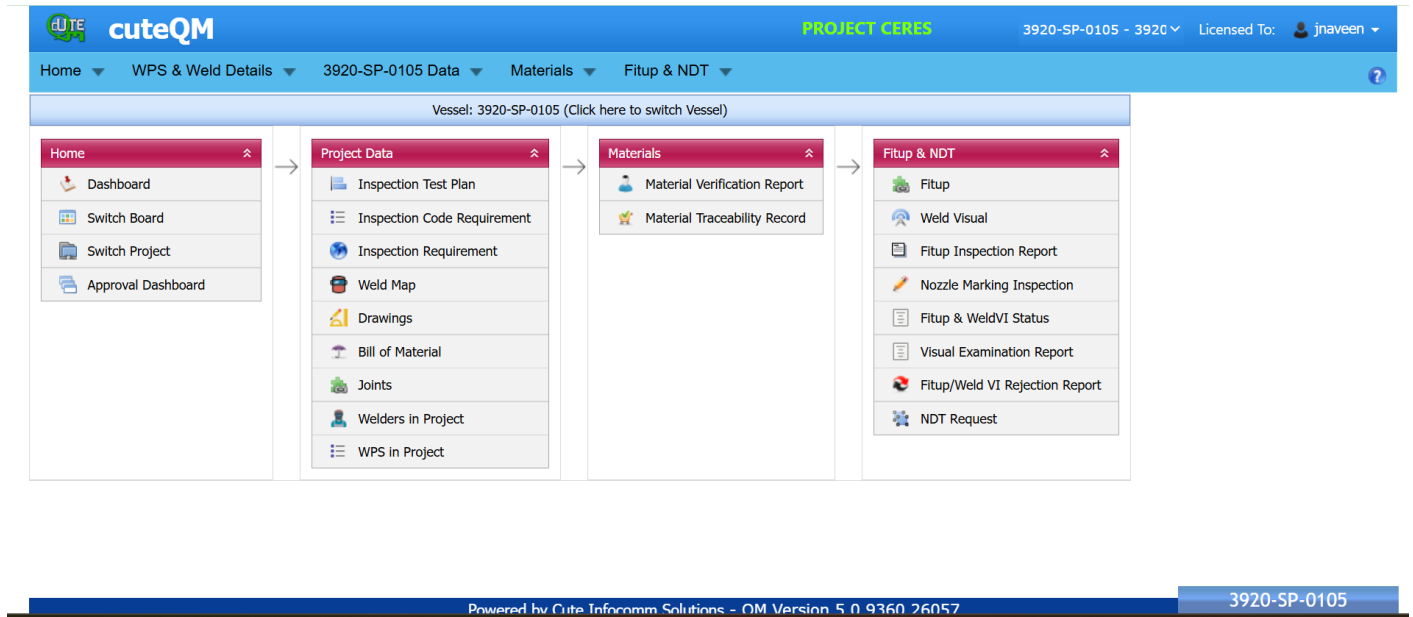
To select the **Switch Board** tab,

1. Navigate to **Home**.
2. Click **Switch Board**.

The **Switch Board** tab includes multiple options such as **Welder & WPQ, Calibration, Engineering, Inspection, Stage Inspection, NDE & Other NDE Reports, and Reports.**

The screenshot displays the cuteQM software interface. At the top, there is a blue header bar with the 'cuteQM' logo on the left, 'PROJECT CERES' in the center, and a dropdown menu for '3920-SP-0105 - 3920' on the right. Below the header is a navigation bar with several menu items: Home, WPS & Weld Details, 3920-SP-0105 Data, Materials, Fitup & NDT, Stage Inspection, Documentation, and Help. The main content area is divided into several vertical panels. The first panel is the 'Home' menu, which includes options like Dashboard, Switch Board, Switch Project, Approval Dashboard, Progress Monitoring, Welding Job Card, and Daily Inspection Status. The second panel is 'Project Data', containing items like Inspection Test Plan, Fabrication Check List, Inspection and Test Procedure, Inspection Code Requirement, Inspection Requirement, Production Test Coupon, Project Document Requirement, Weld Map, Order Review CheckList, Drawings, Bill of Material, and Bill of Material Summary. The third panel is 'Materials', listing Material Requisition, Material CheckList, NCR, Design Change Requirement, Welding Material Requisition, Material Certificates, Manage Plate Cutting Plan, Test Equipments, Welder Consumable Issue Slip, Material Receiving & Inspection, Material Receiving Analysis (highlighted), and Pending MIR. The fourth panel is 'Fitup & NDT', showing Fitup, Weld Visual, Fitup Inspection Report, Nozzle Marking Inspection, Fitup & WeldVI Status, Visual Examination Report, Fitup/Weld VI Rejection Report, Generic NDT Request, NDT Request, NDT Request (Internal), NDT Status, and Joint Status. The fifth panel is 'Stage', which is partially visible. At the bottom of the interface, there is a footer bar with the text 'Powered by Cute Infocomm Solutions - QM Version 5.0.9360.26057' and a dropdown menu for '3920-SP-0105'.

The menu will be shown are accessible. For users with limited access, they will see limited items in the switch board and menu too.



## Switch Project

The **Switch Project** tab in the **Home** menu helps you to add a new project/equipment and switch between various projects and equipment added in the app.

## Switch between Various Projects and Equipment's

1. Navigate to the **Home**
2. Click **Switch Project**.

The switch project window opens with a list of projects and equipment's that are already added in the web.

[image-1651037564931.png](#)

Image not found or type unknown

**Figure 2.1: Switch project window**

3. If you want to switch between various projects and equipments,

- a. Select a project you want from multiple projects listed in the left side of the window.

Once you have selected the project, a list of equipments related to the project is displayed.

- b. Select an equipment you want from multiple equipments listed in the right side of the window.

4. Click **Select**.

To know how to add a new project, see the topic, "[Projects](#)".

To know how to add a new equipment, see the topic, "[Equipments](#)".

---

Revision #10

Created 27 April 2022 05:01:46

Updated 25 August 2025 02:55:54 by Jnaveen