

# 1. User Management

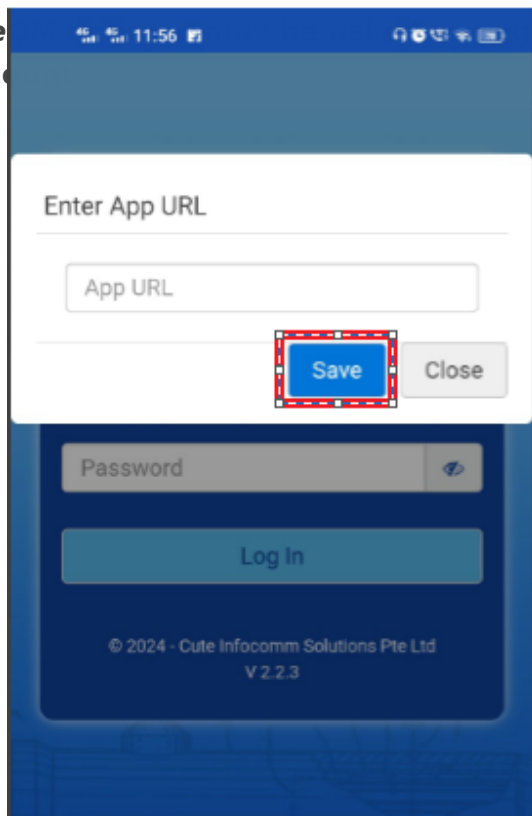
## 1.1 Downloading *cuteQM* app


To use the *cuteQM* app you must first download it from the **Play Store**.

1. Open the **Play Store** and search for "*cuteQM*".
2. Download and install the *cuteQM* app on your mobile phone.
3. After installation, open the *cuteQM*

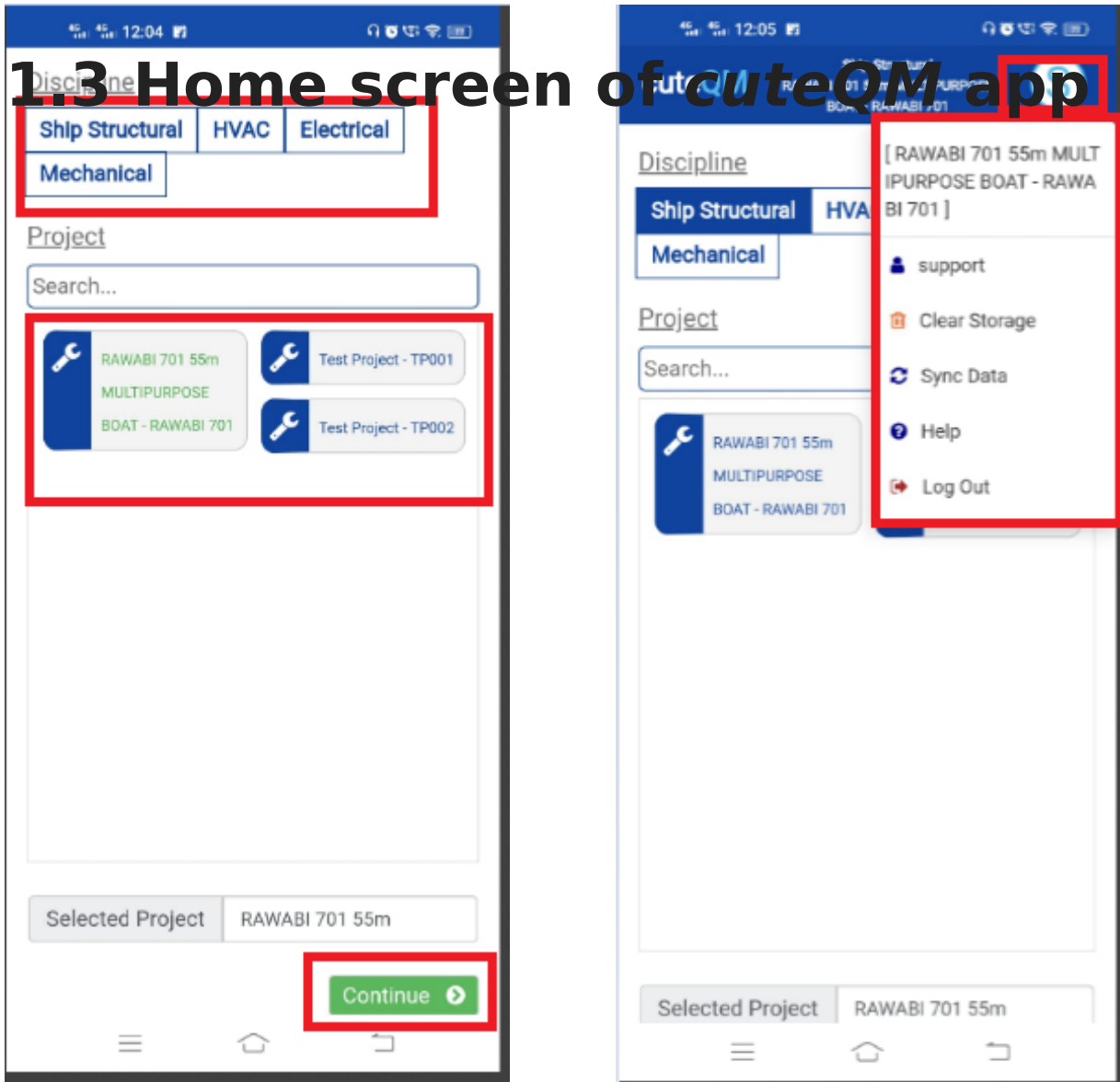
*You are ready to go!*

## 1.2 Log in




1. Before enter your user id and password, tap  and enter the app URL <http://www.cuteqm.com/cuteQMPTUSPAPI>.
2. Tap **Save**.
3. Enter your user id and password in the allocated fields.
4. Tap **Log in** to complete the process.

The home screen of the **cuteQM** app is appeared.



1. **Module** – helps to select the module. Select Mechanical module
2. **Project** – Helps to select the project. select the project.
3. Click **Save** button to go to the menu screen.

 (show/hide icon) helps to show/hide the user id information that is displayed in the right panel of the home screen. if you touch this icon the information appears on, if you touch this icon again the information goes off.

- **Clear Storage** - clears all data in this app. Tap the **Clear Storage** option to delete all the data.
- **Sync Data**- synchronizes your inspection results with the respective reports in the web application. If your inspection results are not automatically synchronized with the web application, tap the **Sync Data** option for manual synchronization.
- **Log out** - To log out from the cuteQM app.

---

Revision #4

Created 22 August 2024 13:31:25 by Shybin

Updated 10 December 2024 05:52:25 by Shybin